



SHAWNEE SHARKS



Plants



At Shawnee Elementary, the second grade students just completed their science unit on Plants. The students participated in a variety of plant projects to show what they learned. Students were able to monitor plant needs through a lima bean planting project. The students wrapped a lima bean in a damp

napkin, placed it into a ziplock bag, and then the bags were exposed to light. Many of the seeds grew roots and sprouted within a weeks time. They also collected and identified different types of seeds and their properties. Then we created models of the life cycle of a pumpkin from seeds to vines to

the final stage of an orange pumpkin. The students were able to assemble and explain the life cycle of a pumpkin through this hands on project. We had a lot of fun learning about plants!



SHAWNEE SCHOLASTIC BOOK FAIR

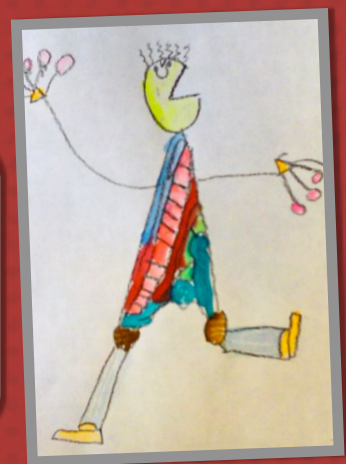


NOTES FROM MUSIC CLASS

Our music classes have gotten off to a great start this fall! We are singing, playing instruments, moving and creating our own rhythmic speech patterns. One of the areas we've focused on this fall has been folk dance and movement exploration. Moving rhythmically allows us to internalize that most important musical element - the steady beat. As beginning movers, first graders have been exploring how their bodies can move to music. We've experimented with different types of locomotor movement and moving individual body parts. Second and third grades have started learning simple folk dances and play party games, such as "Bow Wow Wow" and "Alabama Gal". Fourth grade has added two new dances to their folk dance repertoire: a circle dance, "Heel and Toe", and a Russian mixer dance, "Sasha!"



2nd Grade explored the artistic styles of Spanish painter Joan Miro in art class. They used line, shape and color to create abstract fantasy figures.



COMMUNITIES COME TO LIFE

SHAWNEE SHARKS



The Shawnee third grade classes explored, compared, and contrasted the various types of communities as they investigated the first social studies unit. Then, the students created models to show aspects of the various types of communities. Each class voted on one to construct and brainstormed types of buildings to include. Student engineers designed and erected the various communities, the road crews formed the main roads, and the builders created the essential buildings. Some of the buildings included were hotels, malls, stores, firehouses, police stations, hospitals, arenas, factories, movie multiplexes, apartment buildings, and of course schools.

The community experts are looking forward to applying their skills to learning about maps and globes as they approach unit 2.

